



البنعلي للتموين الصناعي
AIBINALI INDUSTRIAL SUPPLIER

INTEGRITY | HUMILITY | ENTREPRENEURIAL-CULTURE

SINCE 1969

A decorative graphic consisting of a thick orange line that starts from the top right, curves down and left, then continues horizontally to the left, and finally curves down and left again, ending with a solid orange circle. In the top right corner, there is a close-up photograph of a yellow industrial pipe with a flange.

ABOUT US

Established in 1969, ALBINALI INDUSTRIAL SUPPLIER has over five decades of expertise, making us a trusted leader in the Saudi industrial sector. We've built strong relationships with top enterprises and represent renowned international manufacturers. Our core activities focus on importing and distributing a diverse range of industrial products, catering to various sectors like refineries, construction, and pharmaceuticals. We're committed to streamlining processes, empowering businesses, and providing top-notch solutions. With passion and dedication, we're ready to redefine the industrial services industry and excel in delivering excellence.

OUR VISION

Working together to empower Saudi Arabia's industrial excellence through trusted partnerships, decades of expertise, and exceptional services.

The background of the page features a stylized industrial scene. In the upper left, a large, thick orange pipe curves downwards. Below it, a thin orange line extends horizontally and then turns downwards. On the right side, a solid orange vertical bar runs from the top to the middle. The bottom half of the page shows a grey industrial building with a blue-tinted glass railing. Behind the railing, three large orange cylindrical tanks are visible, with a metal ladder attached to the building's side.

OUR MISSION

We aim to be Saudi Arabia's most reliable and professional partner, streamlining operations with high-quality industrial products and solutions. With integrity, humility, and an entrepreneurial culture, ensuring customer success.



OUR TEAM

Our success is driven by our dedicated team of professionals, each highly qualified and committed to delivering exceptional service to our clients. We prioritize continuous learning and staying updated on industry trends and technology to provide cutting-edge solutions. This mindset allows us to exceed client expectations and set standards of excellence in the market. We uphold three fundamental values:

ENTREPRENEURIAL - CULTURE

Infusing our team with flexibility and creativity, we transcend accepted boundaries, perpetually uncovering new opportunities for refinement. Our ambition translates into tangible actions, encouraging every team member to transform the best ideas into reality for our clients. We take initiative, meet the desires of our clients, and demonstrate perseverance and adaptability in the face of new industry challenges.

HUMILITY

Acknowledging our imperfections, we remain open to change and a constant desire for improvement. We attentively listen to our clients and suppliers, recognizing that constructive criticism can be profoundly impactful. This approach has allowed us to consistently adapt to market challenges over half a century of operation, continually meeting and exceeding the expectations of our clients.

INTEGRITY

We are committed to understanding our partners and earning their trust, setting a high standard for integrity in all our interactions. We uphold our promises with efficiency and take personal responsibility for doing the right thing in every situation.



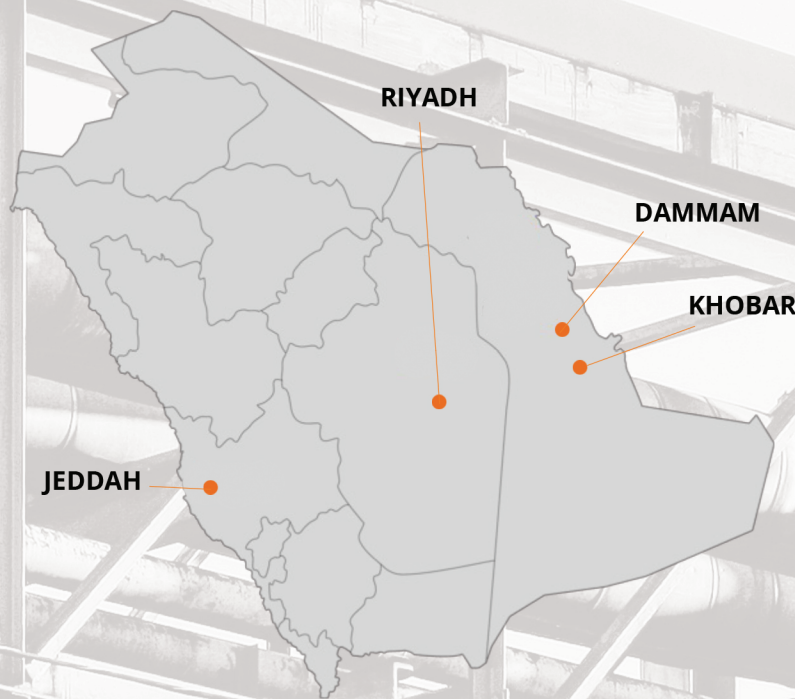
Our journey is characterized by an unwavering dedication to these values, ensuring a professional, profound, and emphatic approach in every endeavor.

WAREHOUSE

We're excited to introduce our newest warehouse, the culmination of extensive research and planning. Spanning 4000 square meters, it's our largest and most efficient facility yet. With advanced technology and a carefully designed storage system, we can accommodate over 5,000 products seamlessly. This facility reflects our commitment to excellence and continuous improvement, ensuring top-notch service and accessibility for our clients.

SHOWROOMS

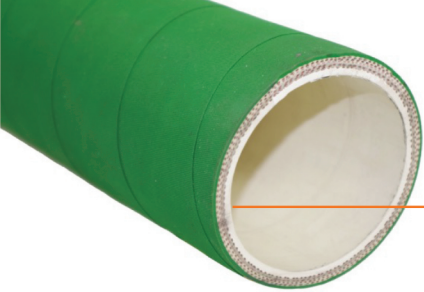
Our showrooms in Riyadh, Dammam, Jubail, Khobar, and Jeddah offer convenience and choice to our customers. With a wide range of products tailored to their needs, clients can explore and receive personalized advice from our knowledgeable staff. Our strategic locations ensure easy access and a seamless experience for customers to make informed decisions. These showrooms embody our commitment to excellence and customer satisfaction.



Explore further our catalog and immerse yourself in industrial perfection, acquiring directly from any of our showrooms or warehouse.

OUR BRANDS





INDUSTRIAL HOSES

RUBBER HOSES

CHEMICAL HOSE



MINING HOSE

COMPRESSED AIR HOSES

CHEMICAL HOSES
XLPE/UHMWPE

STEAM HOSES

BULK MATERIAL SUCTION HOSE

FUEL DISCHARGE LINE HOSES

FOOD SUCTION
AND DISCHARGE HOSES

CEMENT DISCHARGE HOSE

HOT AIR BLOWER HOSE

WATER SUCTION AND
DISCHARGE HOSES

PROPANE/
ARGON GAS HOSES

CONCRETE HOSE

RADIATOR HOSE

TANK TRUCK OIL SUCTION
AND DISCHARGE HOSES.

SINGLE/
TWIN WELDING HOSES

SAND BLAST HOSE

SILICON HOSE

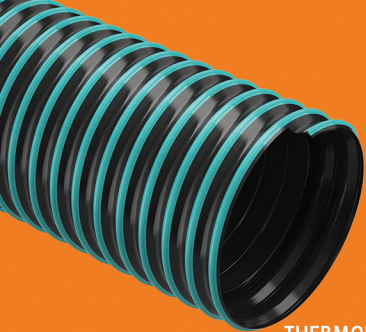
COMPRESSED AIR
HOSE



WATER SUCTION
HOSE

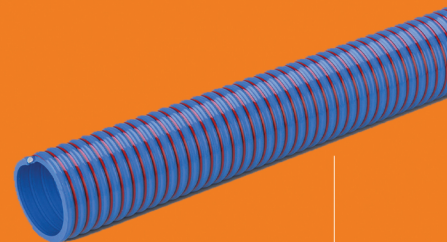


TANK TRUCK HOSE



THERMOPLASTIC DUCT HOSE

PVC HOSES



HEAVY DUTY BLUE
DISCHARGE HOSE

CLEAR SUCTION AND DISCHARGE
HOSE STEEL REINFORCED

MEDIUM DUTY CLEAR SUCTION &
DISCHARGE HOSE BLUE RIGID
PVC SPIRAL REINFORCED

HEAVY-DUTY BLUE SUCTION
AND DISCHARGE HOSE WITH RIGID
PVC SPIRAL REINFORCED

PVC LAYFLAT DISCHARGE HOSE
(STANDARD DUTY/HEAVY DUTY)

PVC VENTILATION DUCT HOSE (GREY)

PVC CLEAR DISCHARGE
HOSES(PHARMA GRADE)

PVC TEXTILE BRAIDED WATER
DISCHARGE HOSE(FOOD GRADED)

FOOD GRADED SUCTION AND
DISCHARGE HOSES

CLEAR PU ANTISTATIC DUCT HOSE
GREEN (MEDIUM DUTY/HEAVY DUTY)

THERMOPLASTIC DUCT HOSE

HIGH-TEMPERATURE DUCT
HOSE 180 DEGREE

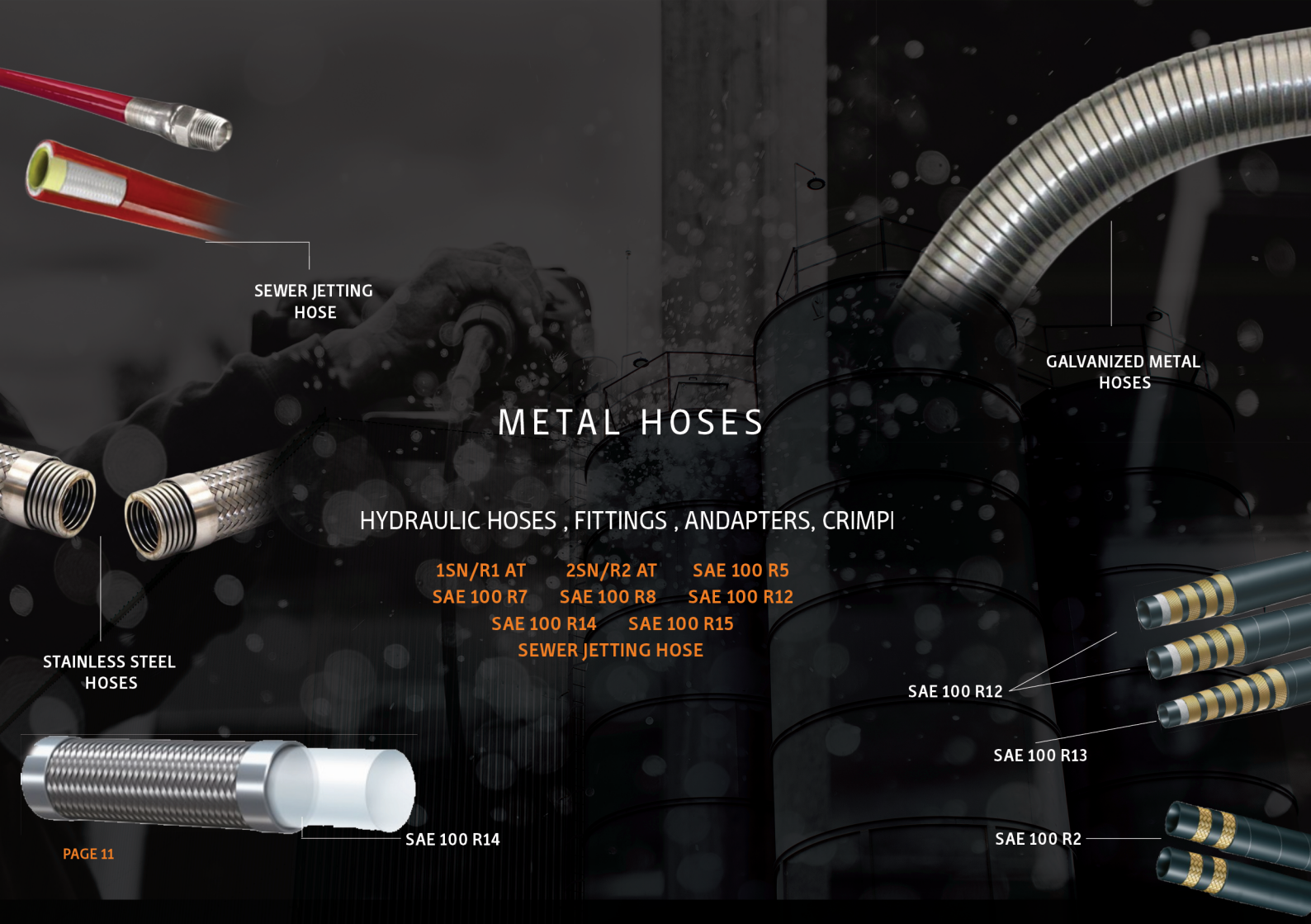


TEXTILE BRAIDED HOSE

CLEAR PVC-COATED
DUCT HOSE

CLEAR SUCTION
HOSE





SEWER JETTING
HOSE

GALVANIZED METAL
HOSES

METAL HOSES

HYDRAULIC HOSES , FITTINGS , ANDAPTERS, CRIMPI

1SN/R1 AT 2SN/R2 AT SAE 100 R5
SAE 100 R7 SAE 100 R8 SAE 100 R12
SAE 100 R14 SAE 100 R15
SEWER JETTING HOSE

STAINLESS STEEL
HOSES

SAE 100 R12

SAE 100 R13

SAE 100 R2

SAE 100 R14

FITTINGS & ACCESSORIES

COUPLINGS

MILLER COUPLINGS

MILLER COUPLINGS

CAMLOCK COUPLINGS

UNIVERSAL COUPLINGS

QUICK HYDRAULIC
COUPLINGS

PERROT COUPLINGS

STORZ COUPLINGS

GROUND JOINT COUPLINGS

QUICK AIR COUPLINGS

BAUR COUPLINGS

BAND LOCK COUPLINGS

WING NUT COUPLINGS

DRY CONNECT/
DISCONNECT COUPLINGS

UNIVERSAL COUPLINGS

STORZ COUPLINGS

FITTINGS & ACCESSORIES

BUTTERFLY VALVE



VALVES SECTION

BALL VALVES
GATE VALVES
CHECK VALVES
GLOBE VALVES
BUTTERFLY VALVES
FOOT VALVES
Y STRAINER VALVES
ANGLE VALVES
NEEDLE VALVES
PISTON GATE VALVES
SAFETY VALVES



BALL VALVE



CHECK VALVE

PISTON VALVE

CLAMPS

DOUBLE BOLTED CLAMPS
WORM DRIVE CLAMPS
SUPERIOR CLAMPS
SPIRAL CLAMPS
INTERLOCKING CLAMPS
ALUMINUM SAFETY CLAMPS
BAND IT

WORM DRIVE CLAMP



DOUBLE BOLT CLAMP

INTERLOCKING CLAMP



SUPERIOR CLAMP

PIPE FITTINGS, WELDED/THREADED

KING COMBINATION NIPPLE
HOSE MENDER
FLANGES, HOSE NIPPLE
HEX NIPPLE
HEX BUSHING
HEX PLUG
REDUCING SOCKET
UNION

TEE
ELBOWS
FEMALE COUPLING
FEMALE END CAP
CONCENTRIC NIPPLE
HEXENTRIC NIPPLE
PIPE NIPPLE



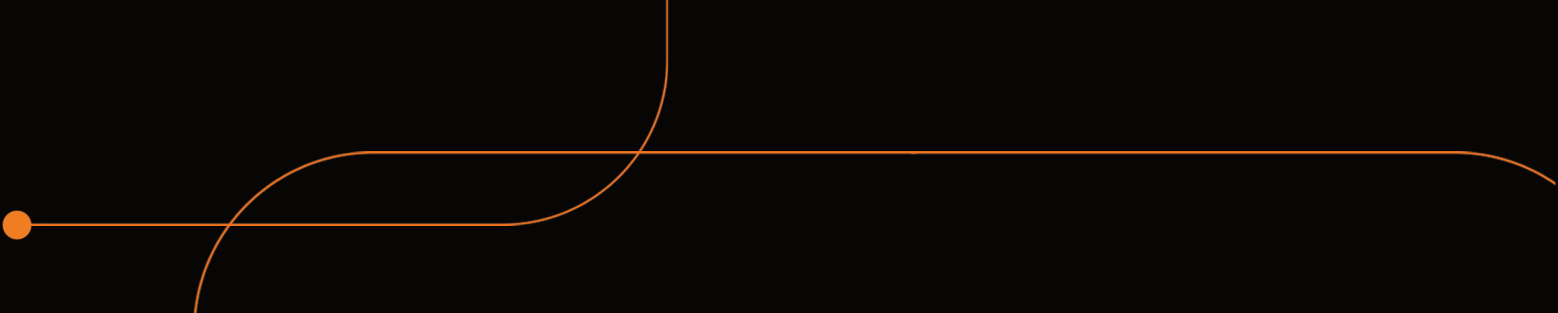
WELDED FITTING



THREAD FITTING

FUEL NOZZLES

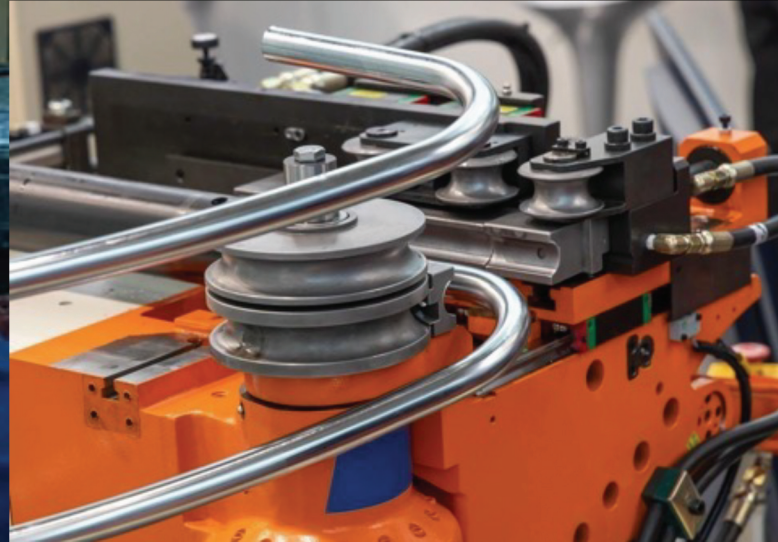


A decorative graphic consisting of a horizontal orange line that starts with a solid orange circle on the left. The line extends to the right and then curves upwards and to the right, ending in a curved shape.

We specialize in crafting high-quality hydraulic hoses and fittings for vehicles, off-road equipment, and industrial machinery.

Our services also include manufacturing heavy-duty carbon steel hydraulic tubes and providing assembly and replacement of conduits and fittings for vehicle air conditioning systems. Additionally, we fabricate stainless steel fittings and flanges for fluid and vapor connections in various industrial settings.

We offer end-to-end construction services, including procurement, material delivery, and execution. Our industrial services guarantee perfection, with bespoke assembly of hoses and tubing. We ensure a hassle-free purchasing experience with free delivery within 24 hours. Our product range includes rubber and PVC hoses, hydraulic hoses, fittings, valves, and fluid control components made from materials like carbon steel, stainless steel, PVC, and copper.





***SOMETHING EXCITING IS ON THE HORIZON
STAY UPDATED FOR THE BIG REVEAL***



حاله



CONTACT US

HEAD OFFICE & WAREHOUSE

AHMED BIN TOLOON ST, KHALDIA SOUTHERN.
ZIP CODE 32221

TEL: +966 (13) 826-0122
+966 (13) 827-2996
920014916
0138301396
FAX: +966 (13) 826-0588
EMAIL: INFO@ALBINALICO.COM

JEDDAH SHOWROOM

MECCA ROAD KILO 4-21453
TEL: +966 (012) 689-5175
MOB: +966 (054) 787-1839

RIYADH SHOWROOM

OLD INDUSTRIAL AREA, ALI BIN ABI
TALIB ROAD
TEL: +966 (011) 4383902
MOB: +966 (056) 482-0289

AL-KHOBAR SHOWROOM

7TH STREET, PRINCE TALAL INTERSECTION.
TEL: +966 (013) 867-0676
MOB: +966 (054) 787-0269

DAMMAM SHOWROOM

PRINCE NAIF BIN ABDULAZIZ ROAD
TEL: +966 (013) 817-3898
MOB: +966 (054) 787-0425

EMAIL: SALES@ALBINALICO.COM